



Emergency Storage Project

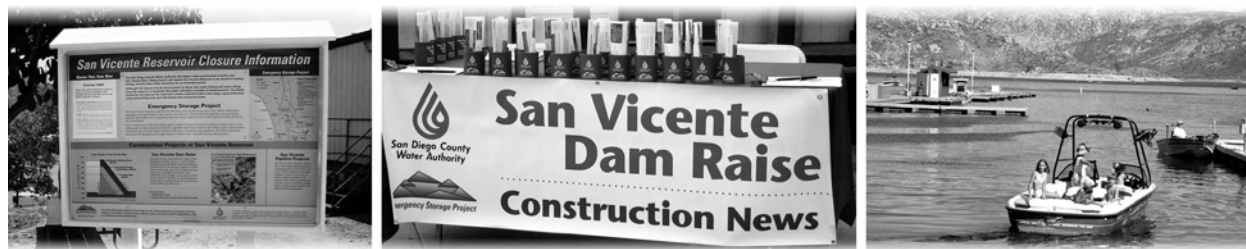
# San Vicente Dam Raise

Building Water Reliability Through the Emergency Storage Project

San Diego  
County  
Water  
Authority

The San Vicente Dam Raise is part of the Emergency Storage Project, a system of reservoirs, interconnected pipelines, and pumping stations designed to make water available to the San Diego region in the event of an interruption in imported water deliveries.

The Water Authority is a public agency serving the San Diego region as a wholesale supplier of water. The Water Authority works through its 24 member agencies to provide a safe, reliable water supply to support the region's \$157 billion economy and the quality of life of 3 million residents.



The San Diego County Water Authority uses an information kiosk and boater outreach events (pictured above), as well as newsletters, community meetings, and mailings to update San Vicente recreational users and communities about the project.

## Investing in Water Reliability

Increasing the height of San Vicente Dam is an important investment to ensure that water is available to the San Diego region if access to our imported water is severed. Over the years, the San Diego County Water Authority has imported up to 90 percent of the region's water supply. The pipelines that carry imported water travel hundreds of miles and cross several major fault lines on the way to San Diego County. A prolonged drought, earthquake, or other disaster could interrupt the county's imported water supply for up to six months.

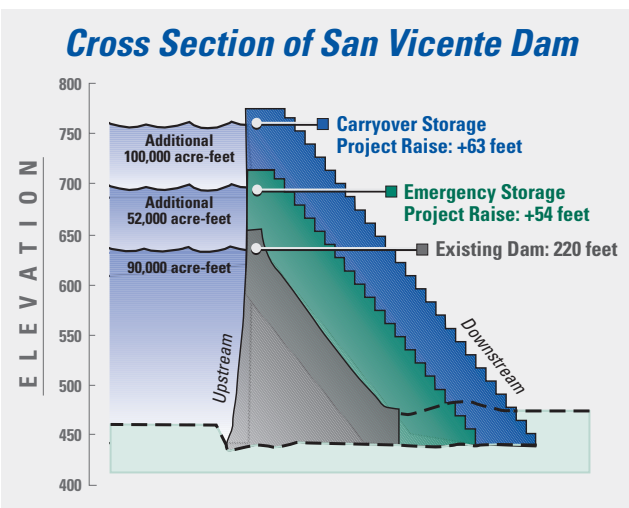
The San Vicente Dam Raise will protect the region's vibrant economy, job base, and quality of life by increasing the amount of water available for use within the county during emergencies.



San Vicente Dam currently stands at 220 feet.

## Raising San Vicente Dam

San Vicente Dam currently stands at 220 feet. It will be raised a total of 117 feet for both the Emergency Storage Project and the Carryover Storage Project. The first 54 feet of the dam raise is part of the Emergency Storage Project. This will create an additional 52,000 acre-feet of water storage capacity for use in an emergency.



San Vicente Dam will be raised a total of 117 feet for both the Emergency Storage Project and the Carryover Storage Project.

The additional 63-foot raise is for the Carryover Storage Project, which will allow San Vicente Reservoir to capture up to 100,000 acre-feet of water during wet seasons when it is plentiful and then carry it over for use in subsequent dry years.

Construction is scheduled from 2009 to 2012. The new dam will be built on top of the existing dam using roller-compacted concrete. The raised dam will be as strong as a conventional concrete dam, but will cost less because the roller-compacted concrete construction process takes less time. The dam will be built to remain operational in the event of a major earthquake.



San Diego County  
Water Authority

Capital Improvement  
Program



The downstream side of the dam will be completely covered by roller-compacted concrete and will have a new, stair-stepped appearance (see the cross section diagram). Throughout design and construction, the Water Authority will work with the city of San Diego, which owns and operates the dam and reservoir.



Roller-compacted concrete will be used to raise the dam, which was also used to construct the Olivenhain Dam in 2003.

## Closing the Reservoir Necessary for Construction

The water in San Vicente Reservoir will be significantly lowered for construction, requiring the reservoir to be closed to all water recreation, including boating and fishing.

Complete reservoir closure is expected to begin mid- to late-2008. Boating

will resume as soon as the water level reaches the new boat launch, which is expected to be sometime between 2014 and 2017.

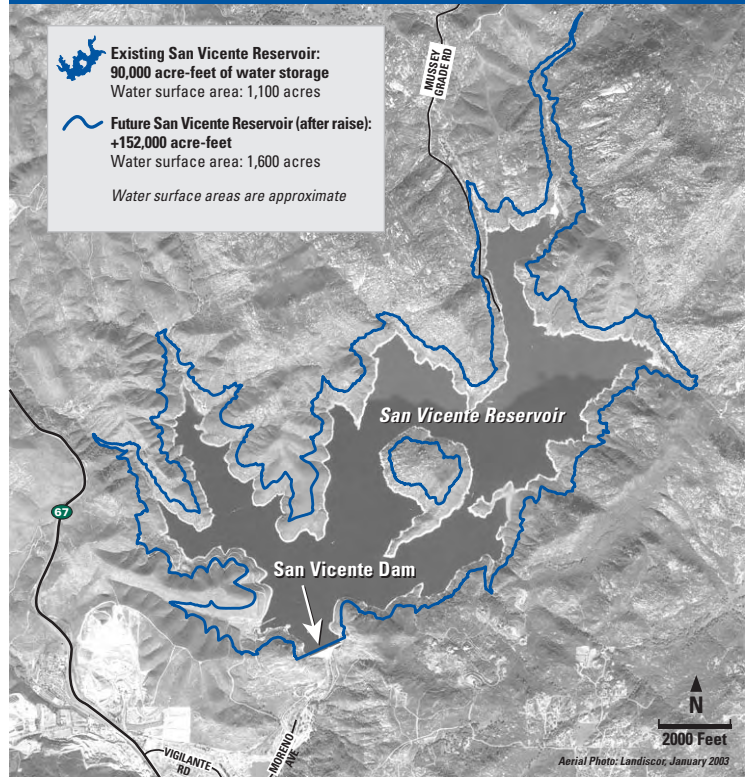
The amount of time to refill the reservoir will depend on rainfall and water supply and demand. The Water Authority is working with the city of San Diego to reopen the reservoir to recreation as soon as possible.

Once the reservoir is reopened, the public will enjoy a number of enhancements. The Water Authority will improve the reservoir's access road, making it safer and less steep, expand the boat ramp and parking area, and add shade trees and picnic areas.

## Getting the Word Out

The Water Authority is working hard to communicate with recreational users and communities surrounding San Vicente Reservoir to provide information on the project and respond to questions and concerns. If you would like to be added to the Water Authority's mailing list, please call the project information line at **(877) 426-2010** or email **ESPinfo@sdcwa.org**.

### San Vicente Reservoir High Watermarks



*Raising San Vicente Dam will significantly add to the reservoir's current 90,000 acre-foot water capacity. An acre foot of water is equal to 325,900 gallons and is the approximate amount two families of four use in one year.*

## San Vicente Dam Facts

- **Current height:**  
**220 feet**
- **New dam height (after raise):**  
**337 feet**
- **Current storage capacity:**  
**90,000 acre-feet**
- **New storage capacity (after raise):**  
**242,000 acre-feet**



*For more information about the San Diego County Water Authority's Emergency Storage Project or the San Vicente Dam Raise, please call toll free (877) 426-2010, email [ESPinfo@sdcwa.org](mailto:ESPinfo@sdcwa.org), or visit our website at [www.sdcwa.org](http://www.sdcwa.org).*

